

# Install the Raspberry Pi Operating System, and Gugusse Compact 2.0 Software for use with the Gugusse PCB Version 3.1

This manual will get your Raspberry Pi and Control board up and running. It was current as of 11/2025. Items might change outside of our control.

## Step 1 – Download the Legacy BullsEye Raspberry Pi Operating System

Download the Raspberry Pi Bullseye Image from:

[https://downloads.raspberrypi.org/raspios\\_full\\_arm64/images/raspios\\_full\\_arm64-2023-05-03/](https://downloads.raspberrypi.org/raspios_full_arm64/images/raspios_full_arm64-2023-05-03/)

Click on the first item at the top of the list and it will download to your computer.

## Index of /raspios\_full\_arm64/images/raspios\_full\_arm64-2023-05-03

Name	Last modified	Size	Description
<a href="#">Parent Directory</a>	-	-	-
<a href="#">2023-05-03-raspios-bullseye-arm64-full.img.xz</a>	2023-05-03 05:26	2.5G	
<a href="#">2023-05-03-raspios-bullseye-arm64-full.img.xz.sha1</a>	2023-05-03 11:29	88	
<a href="#">2023-05-03-raspios-bullseye-arm64-full.img.xz.sha256</a>	2023-05-03 11:30	112	
<a href="#">2023-05-03-raspios-bullseye-arm64-full.img.xz.sig</a>	2023-10-10 14:33	488	
<a href="#">2023-05-03-raspios-bullseye-arm64-full.img.xz.torrent</a>	2023-05-03 11:30	26K	
<a href="#">2023-05-03-raspios-bullseye-arm64-full.info</a>	2023-05-03 04:49	229K	

## Step 1 - Install the Raspberry Pi Operating System

Download and install the Raspberry Pi Imager from <https://www.raspberrypi.com/software/>.

### Raspberry Pi Imager

Raspberry Pi Imager is the quick and easy way to install Raspberry Pi OS and other operating systems to a microSD card, ready to use with your Raspberry Pi.

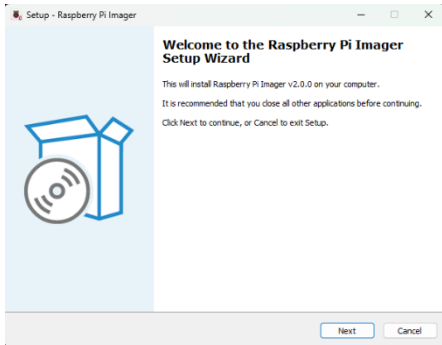
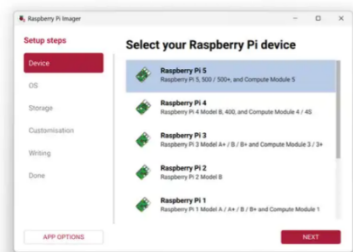
Download and install Raspberry Pi Imager on a computer with an SD card reader. Insert the microSD card you'll use with your Raspberry Pi into the reader and run Raspberry Pi Imager.

Download for Windows

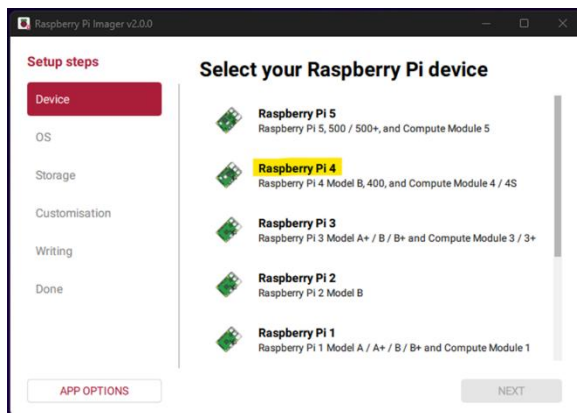
Download for macOS

Download for Linux (x86\_64)

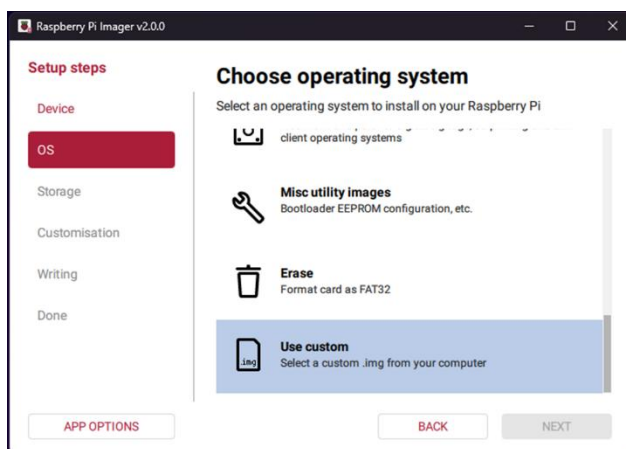
To install on Raspberry Pi OS, type  
sudo apt install rpi-imager  
into a terminal window



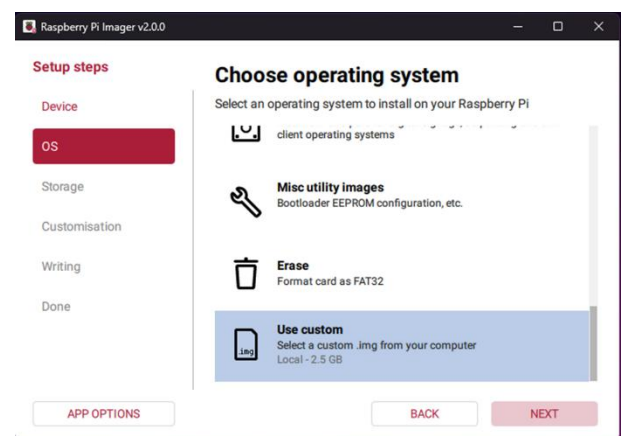
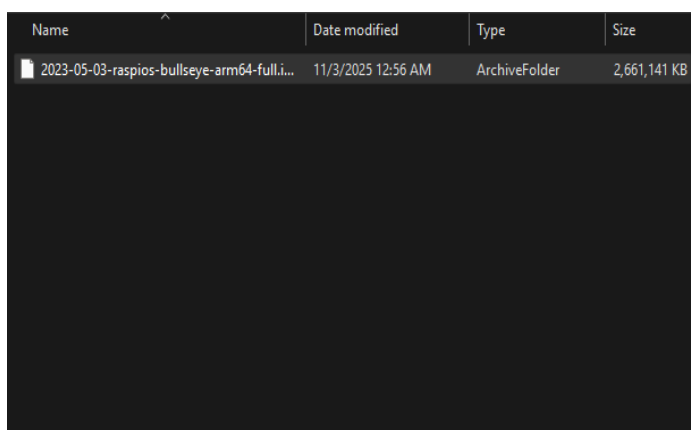
Run the Raspberry Pi Imager. Click “Device”. “Choose Raspberry Pi 4”



Click on “OS”. Choose “Use Custom” from the bottom of the list:

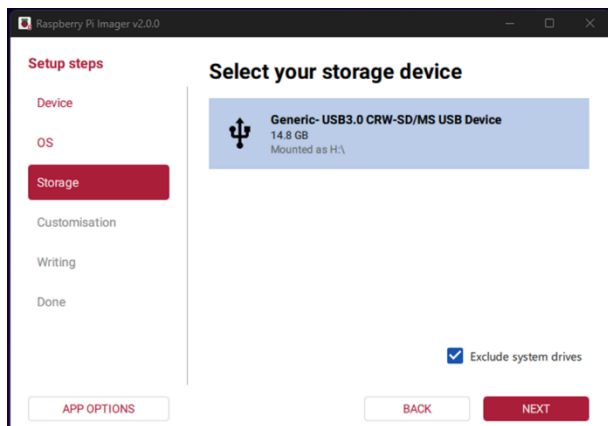


Find the downloaded OS file in your Downloads Directory and click [Next]:



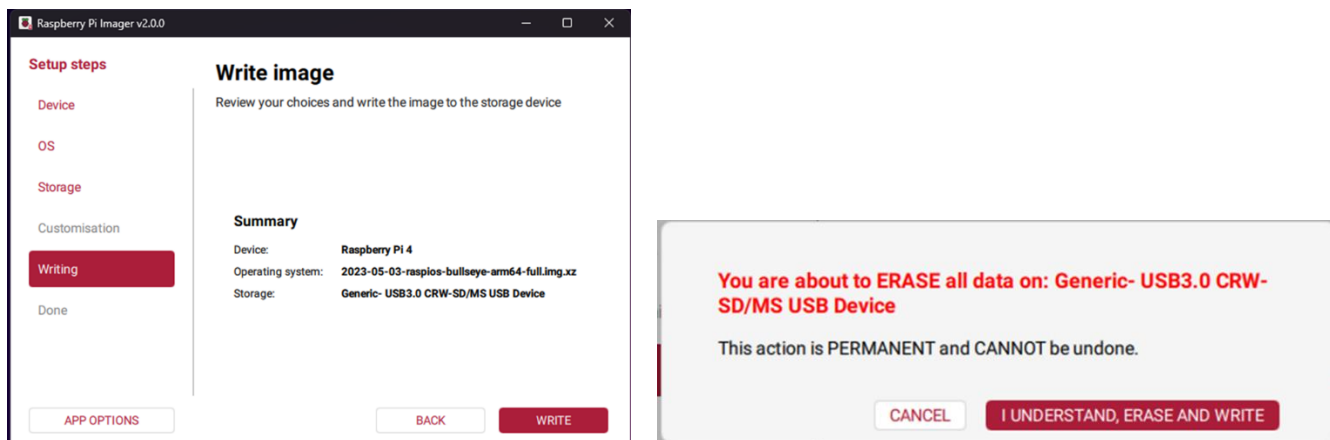
Insert a Micro-SD card that is compatible with your Raspberry Pi in your computer. 16GB should be plenty. TIP: Remove all other USB Hard Drives and USB Thumb Drives from your PC prior to avoid confusion.

Click on “Storage”. Then click on your SD card.

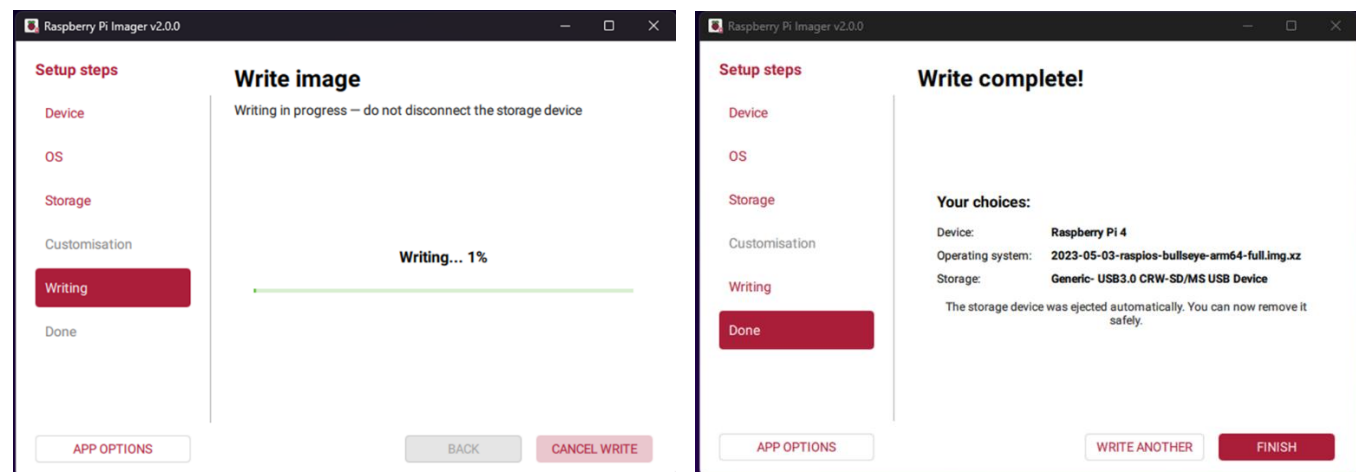


If asked, say NO to the Customisation [sic] settings question.

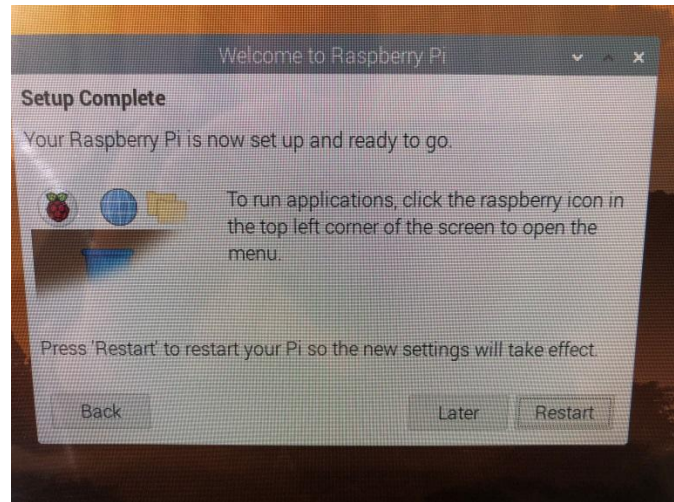
Review the summary and click [WRITE]. Click [I UNDERSTAND, ERASE AND WRITE].



The Operating system will be installed on your Micro SD card. You will be informed when it completes and you can remove the SD card from your computer.

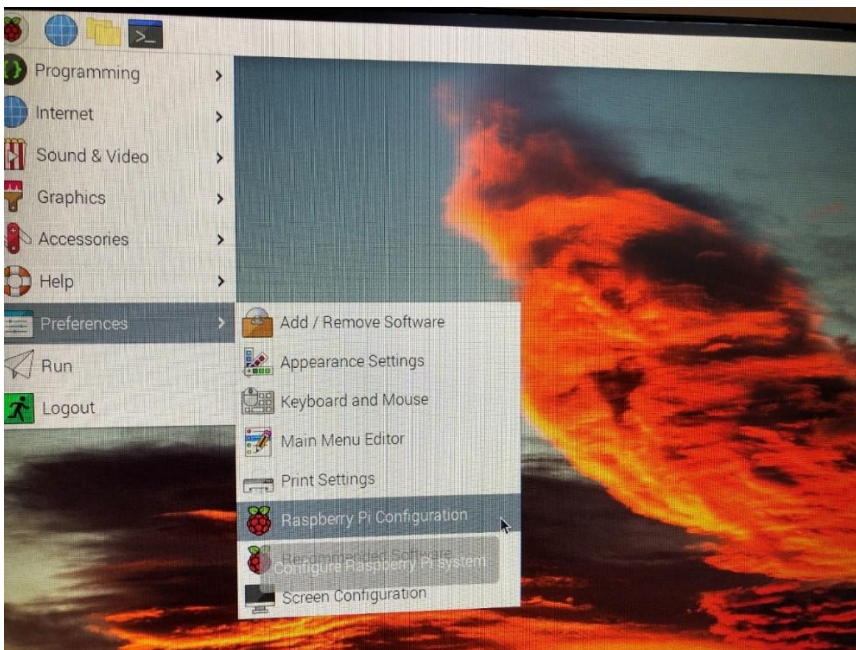


Insert your SD card in your Raspberry Pi and connect it to Power, Keyboard, Mouse, Monitor, and Optionally Network (If not using Wi-Fi). Upon first boot, you will be asked a series of questions about Country and Time Zone, Default User Password (use the username of “pi” and a password of “Raspberry”), Screen Size, WiFi Network Connectivity, and System Update. Reboot to make the changes effective.

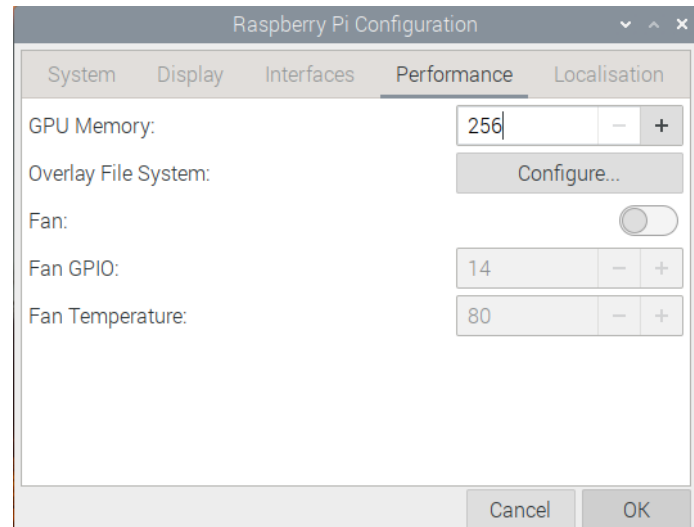
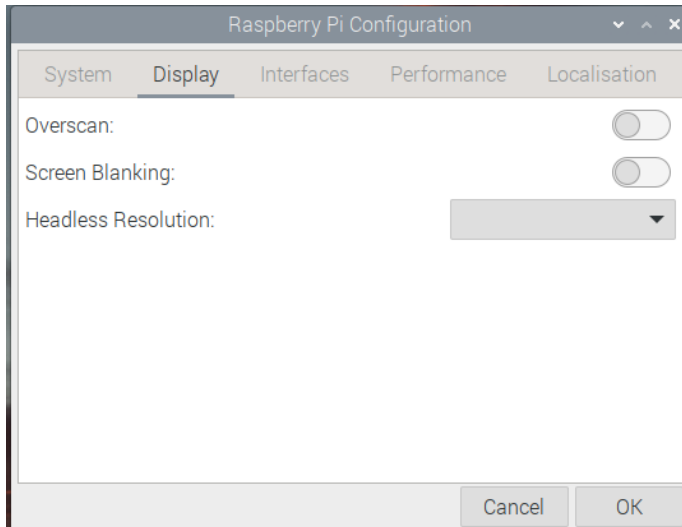


## Allocate 256M of System Video Memory and Disable Screen Blanking on your Raspberry Pi

Open the Raspberry Pi Configuration utility from the Preferences menu.:



Click on the top Display Tab and set “Screen Blanking” to “Off”. Click on the Performance Tab and set “GPU Memory” to 256 and click [OK]. Reboot when prompted.



## Step 2 – Clone the Gugusse Roller source repository

Click the Terminal Window icon on the top bar; it is the one on the right in the picture below.



Execute the following commands (commands are case sensitive):

```
cd
git clone https://github.com/meantux/GugusseRoller.git
```

```
pi@raspberrypi:~ $ git clone https://github.com/meantux/GugusseRoller.git
Cloning into 'GugusseRoller'...
remote: Enumerating objects: 726, done.
remote: Counting objects: 100% (233/233), done.
remote: Compressing objects: 100% (162/162), done.
remote: Total 726 (delta 147), reused 148 (delta 71), pack-reused 493
Receiving objects: 100% (726/726), 158.10 KiB | 300.00 KiB/s, done.
Resolving deltas: 100% (485/485), done.
pi@raspberrypi:~ $
```



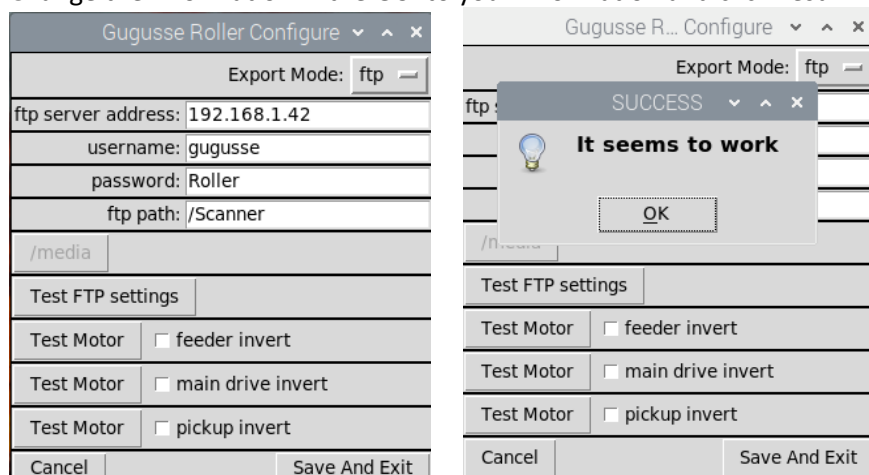
### Step 3 - Configure Gugusse Roller for your FTP server

The Gugusse Roller software was designed to send the captured pictures directly to a FTP server of your choice. A FTP server could easily be configured on your main workstation or on any type of file server. Shared storage systems like the Netgear ReadyNAS, Synology DS, and Drobo N editions provide a way to configure an FTP service. There are literally thousands of ways to install a FTP server at home. Apparently Windows 10 offers it natively as described [here](#).

Once you have configured your FTP server you will need to figure out its IP address (or hostname), the credentials (user and password) and the file path that the Gugusse Roller should use. Execute the following command:

```
cd ~/GugusseRoller
python3 MotorsAndFtpSetup.py
```

Change the information in the GUI to your information and click *Test FTP settings* to test it.



### Step 4 - Test the Install (Load the software)

Load the Gugusse Roller Software by running these commands:

```
cd ~/GugusseRoller
python3 GugusseGUI.py
```

Your system is now ready to be connected to your Gugusse and start scanning.